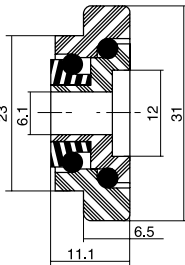


# GALETS À BILLES

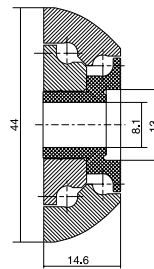
## APPLICATIONS

- Carrosserie industrielle : systèmes de débâchage automatiques pour semi-remorques
- Matière : résine acétal (POM), billes en acier inoxydable AISI 420
- *Body builder and haulage : automatic systems for curtainsiders*
- *Material : acetal (POM) with AISI 420 stainless steel balls*



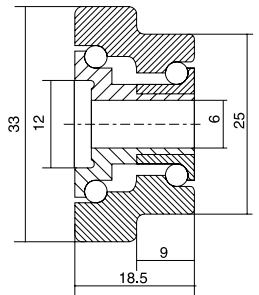
**APN 224 JC**

ø 31 x 11  
 existe avec ou sans chanfreins



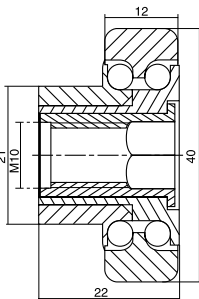
**APN 240 G**

ø 44 x 14,5



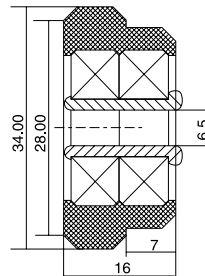
**TRA 033**

ø 33 x 18.5



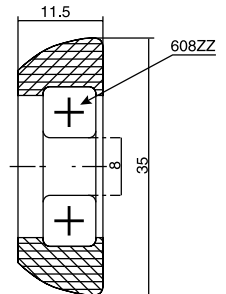
**GBP 40BP.01**

ø 40 x 12



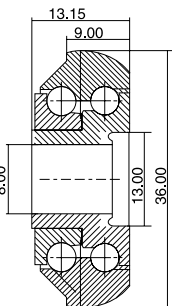
**RSPM034BE.01**

ø 34 x 16



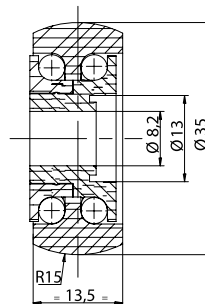
**RSP035BS.02**

ø 35 x 11,5



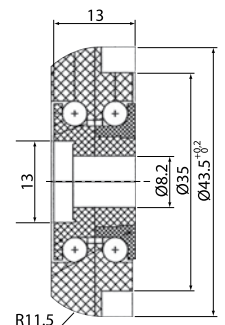
**APN 238**

ø 36 x 13



**GBP 35BB.01**

ø 35 x 13,5



**GBP 44BS.01**

ø 40 x 13